

# ReNewed Herman Miller Action Office (A02) & Ethospace Product Offerings



**Office Furniture Center**  
EXPECT VALUE

Office Furniture Center, as one of the largest remanufacturers of Herman Miller Action Office 2 (AO2) and Ethospace systems furniture in the country, brings exceptional quality, superb customer service and competitive pricing to every project we do. Because of this, you our customer can be assured of unparalleled value in every purchase.

Using base product we acquire from recycling operations across the country, we create our ReNewed AO2 and Ethospace systems from **Re**manufacturing core components and then blend in **New** items as needed. This approach allows us to fully customize our ReNewed solutions to meet your specific your functional, aesthetic and budget requirements. All systems are produced using local craftsmen at our 300,000 sq. ft. showroom, distribution and production facility on the west side of Chicago. When new parts are needed we buy from local and regional American-based companies. These together help us minimize our environmental footprint, maximize finished product quality, control costs/prices and meet best-in-industry turnaround times.

More information on our ReNewed AO2 and Ethospace systems as well as options to help to specify the system that is right for you are contained in the pages that follow, Examples of work products (deliverables) which document solutions are shown at the end of this presentation. Our Office Furniture Specialists and Workstation Designers are ready and able to assist with any project.

On behalf of our organization, I want thank you for the opportunity to earn your business. Stop by or call today to get started!



Mark Awtry, President

Show next page (Right Arrow)



INSTALLATION PHOTOS

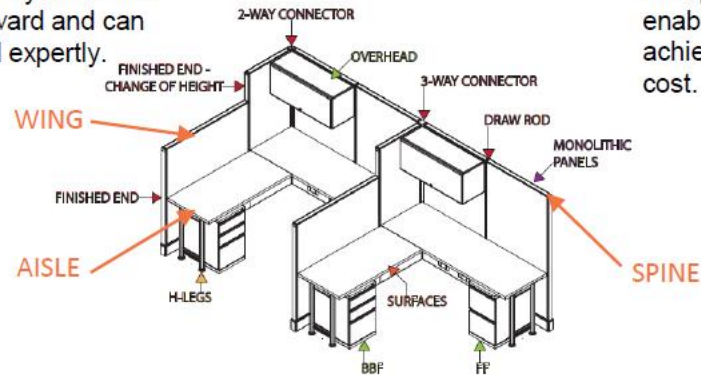
OFC



## Action Office 2 (AO2)



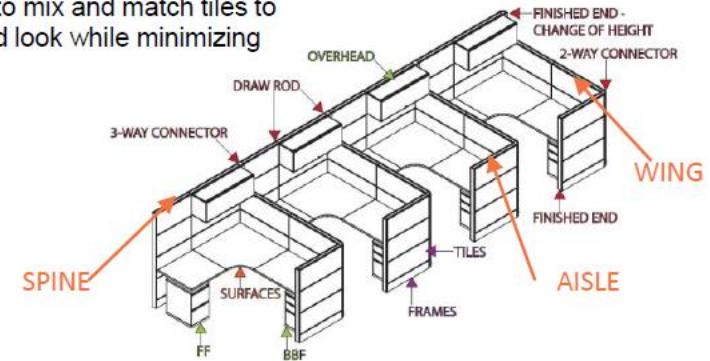
Versatile and hardworking, AO2 provides exceptional value and return on investment. Based on a monolithic panel system, it's a snap to specify and order. Installation is straight-forward and can often be done quickly and expertly.



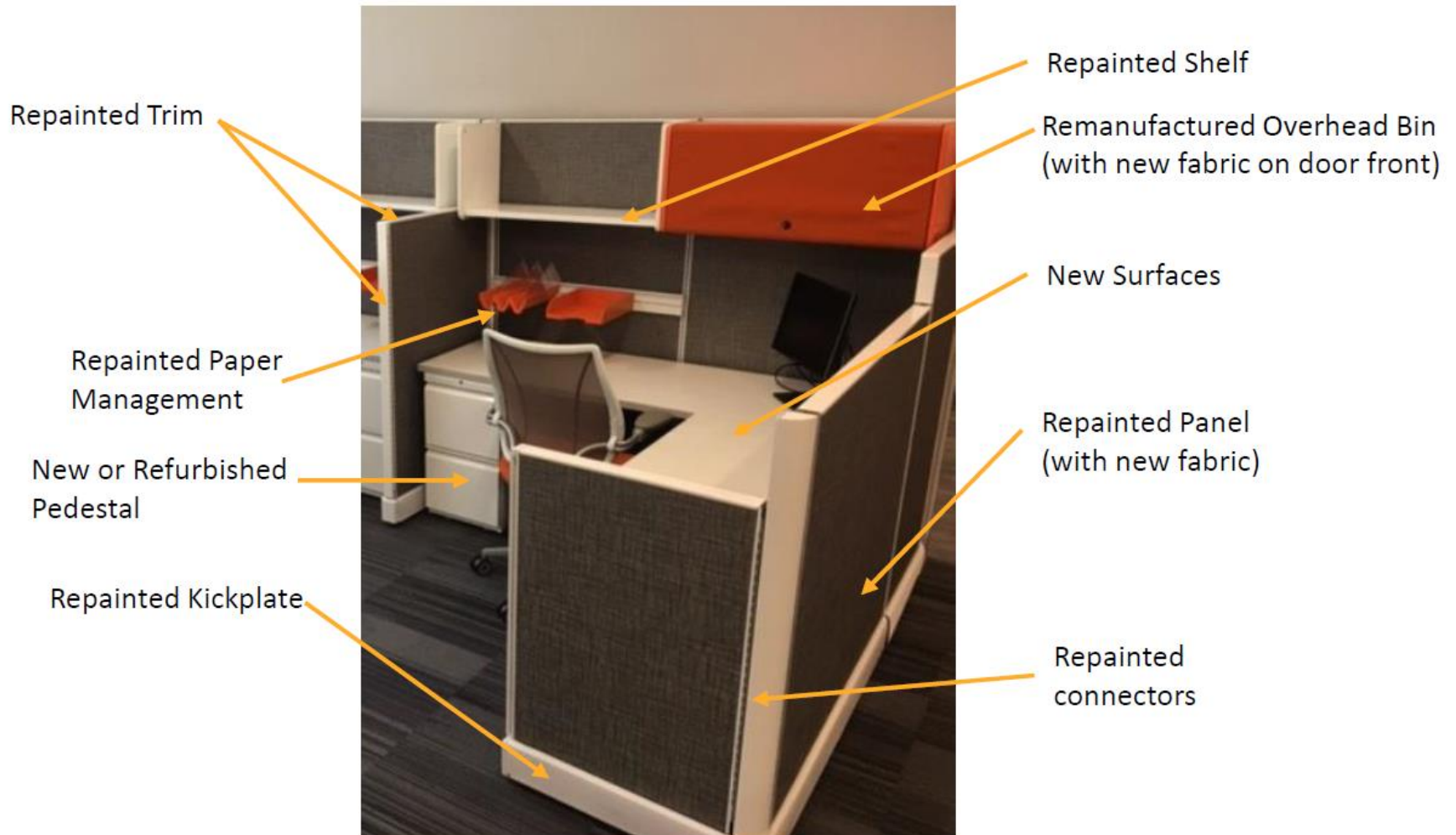
## Ethospace (ETHO)



Highly customizable. Ethospace components can be upgraded, changed, or rearranged with minimal workplace disruption. Frame-and-tile system enables the use to mix and match tiles to achieve a desired look while minimizing cost.



## Action Office 2 (AO2)



**WHAT IS RENEWED?**

**OFC**

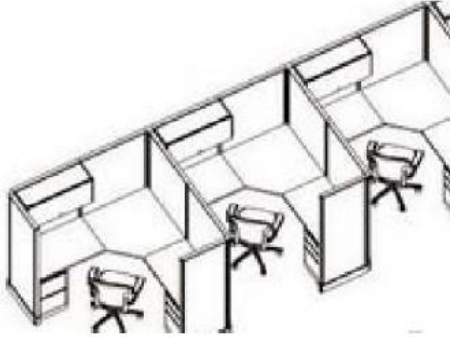
## Ethospace (ETHO)



**WHAT IS RENEWED?**

**OFC**

Uniform (Inline)



Facing (Shared Spine)



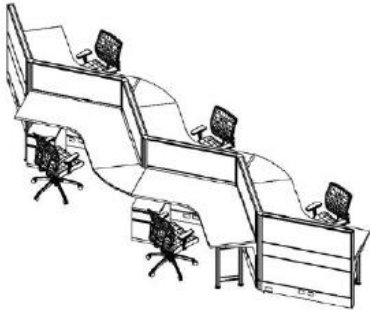
Bullpen (Inline)



Uniform (Shared Spine)



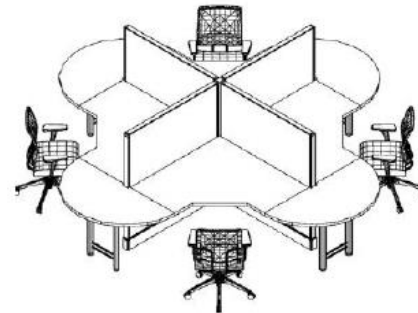
Serpentine



Dogbone



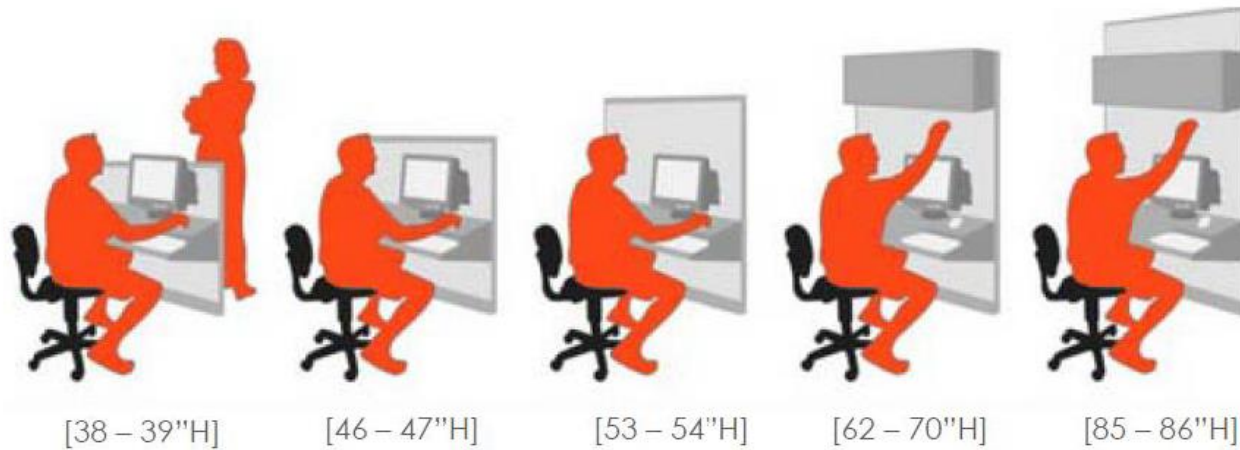
Clover



Pinwheel







#### 38-39"H (Collaborative)

Low panels provide optimal settings for collaboration and are useful when communication among associates is encouraged or required. They are also useful in facilitating supervision and are commonly used as reception stations.

#### 46-54"H (Seated Privacy)

Seated privacy panel heights provide a degree of visual privacy when seated. They are typically used in environments where some privacy is useful, but communication, interaction, or occasional supervision is helpful. Ideal for call center applications.

#### 62-70"H (Standing Privacy)

Standing privacy panel heights afford general visual privacy in the workstation even when others are standing. Full use can be made of overhead storage in this range.

#### 86"H (Full Privacy/Private Office)

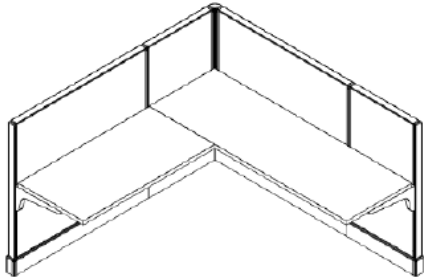
Private office panels can reach full ceiling heights, providing complete visual privacy and sound privacy.

#### Combination Panel Heights

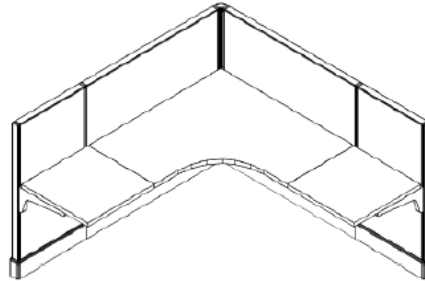
Commonplace to use a combination of high and low height panels to meet specific aesthetic or functional needs.



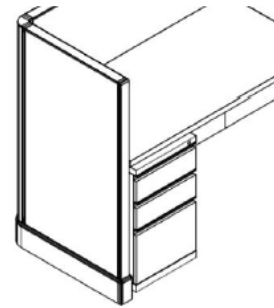
All Straights



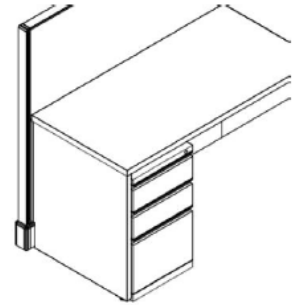
Curved Corner



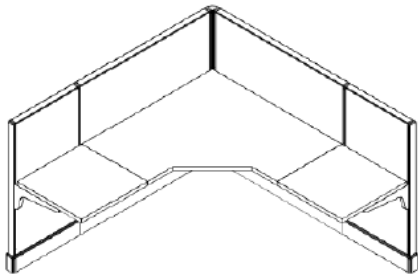
Aisle Panel



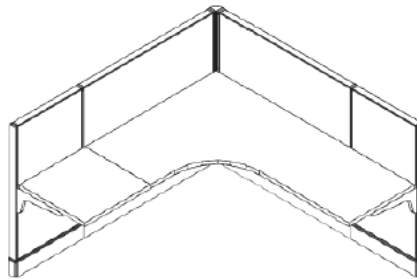
Laminated Panel



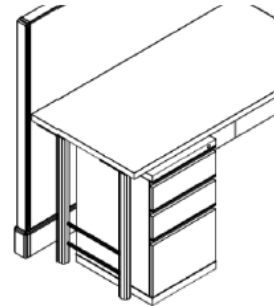
Angled Corner



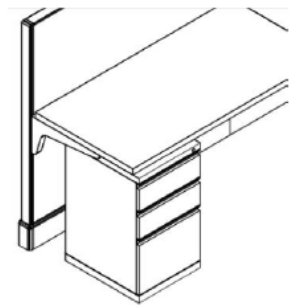
Ext. Curved Corner



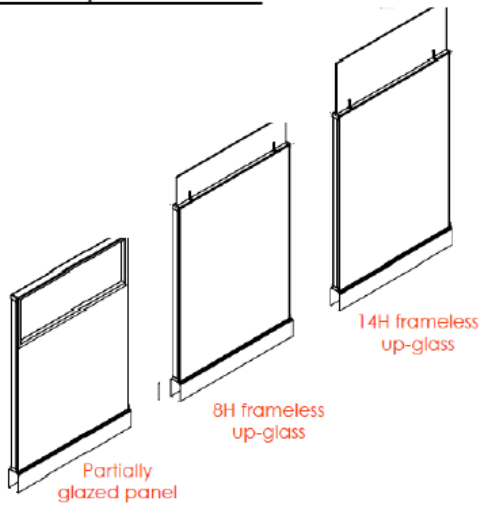
Leg (Many Styles)



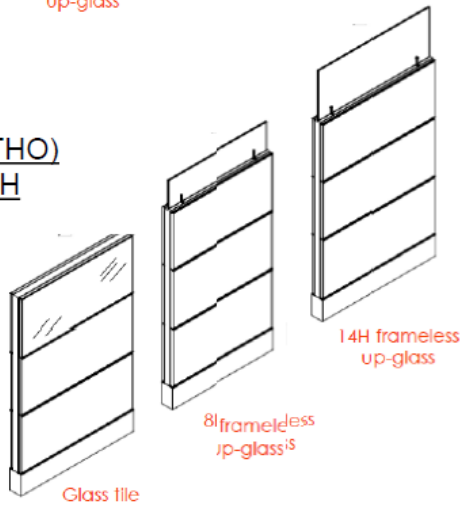
Exposed End



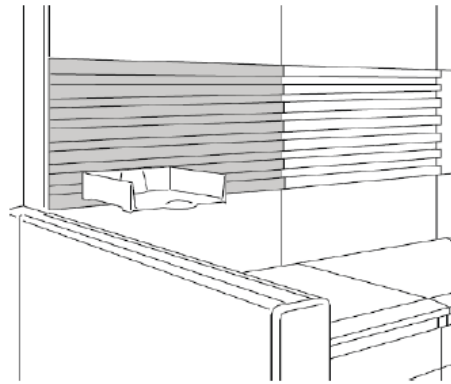
Action Office 2 (AO2)  
Glass Options – 53”H



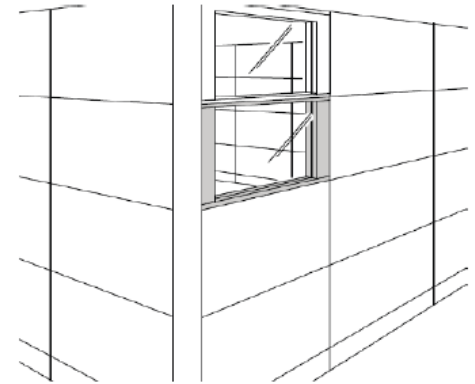
Ethospace (ETHO)  
Glass – 54”H



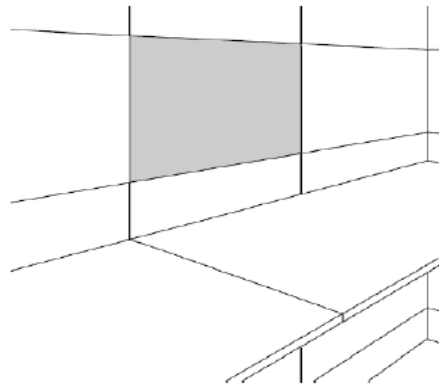
Tile Options for Ethospace only



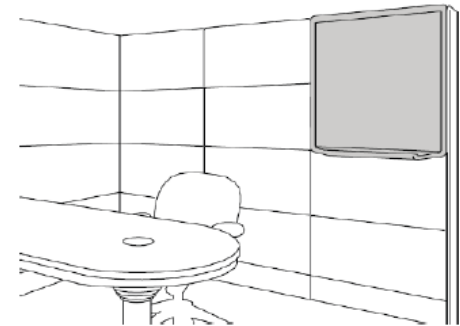
Rail Tiles



Window Tile



Face Tiles (fabric, metal, tackable)



Marker Tiles

Box/Box/File



Mobile Box/File



Lateral File



File/File



Overhead



Shelf





Grommets



Scallops



Paper Management



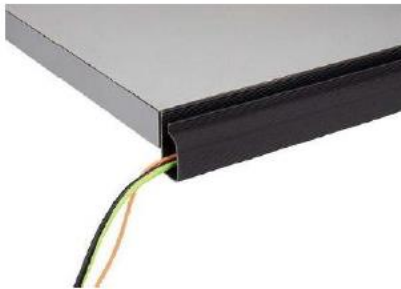
Task Lights



Power Module



Trough



Monitor Arm (Single or Double)



Pencil Drawer





Comic Strandz



Asian Sand



Kensington Maple



Natural Maple



Beigewood



River Cherry



Wild Cherry



Colombian Walnut



Cafelle



Portico Teak



Skyline Walnut

High Pressure Laminate (HPL) worksurfaces are 1-1/4" thick, nominal.

( Actual thickness is 1-3/16" +/- )

Default Edge Finish: All workstations have matching or complementary edge unless otherwise specified

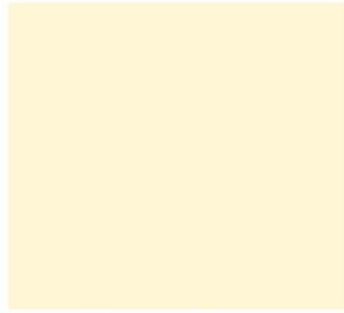
All standard HPL finishes are a matte finish in #38 or #60 only ( -58 for Natural Maple)



Designer White



Frosty White



Antique White



Pepperdust



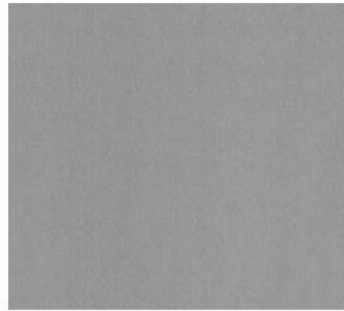
Fashion Grey



Black



White Tigris



Satin Stainless



Vapor Strandz

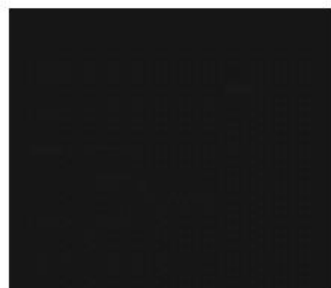


Astro Strandz

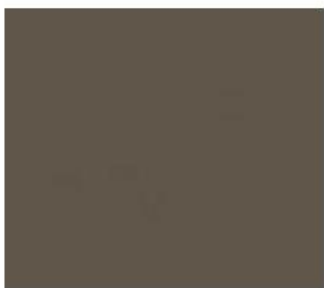
# SURFACE LAMINATE OPTIONS



Standard Colors



Black Umber



Medium Tone



Inner Tone Light



Light Grey

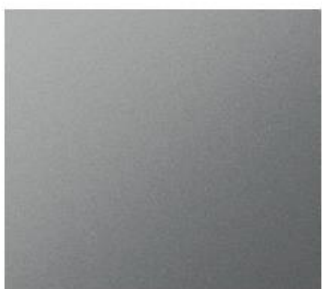


Chicago Grey

Premium Colors

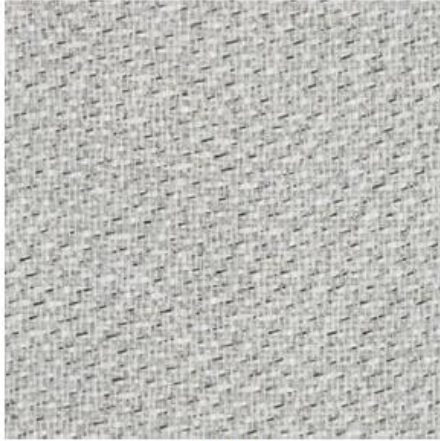


Appliance White



Metallic Silver

## Dayton



Fog



Silver



Fog



Ocean



Straw



Blush

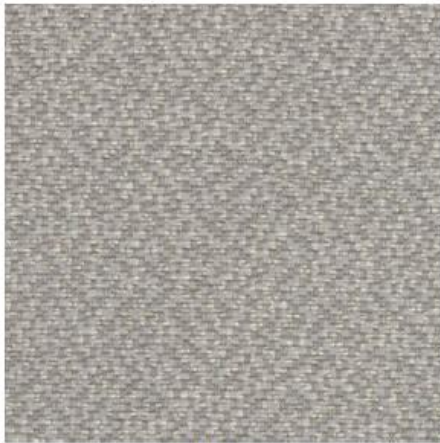


Golden



Honey

## Midway



Haze



Mineral



Almond



Wheat



Opal



Rye



Saddle



Oasis



Chambray

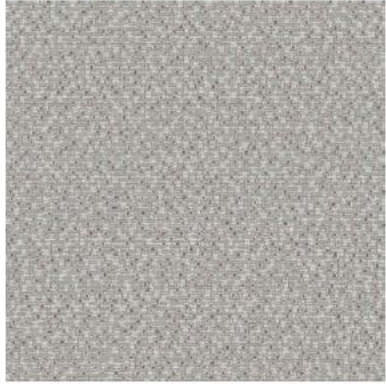


Flint



Haze

### Century



Fossil



Aspen



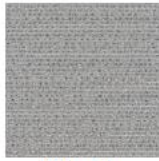
Amber



Dew



Fossil



Atlantic



Driftwood

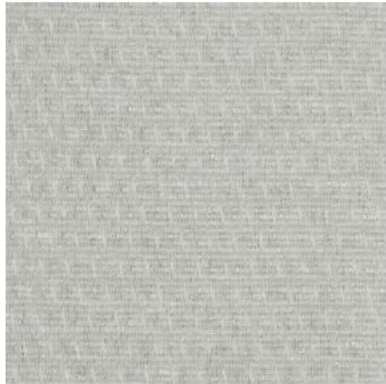


Oro



Limestone

### Columbus



Fog



Khaki



Straw



Citrus



Silver



Stone



Fog



Midnight

### Traction



Chrome



Platinum



Jute



Wheat



Earth



Greystone



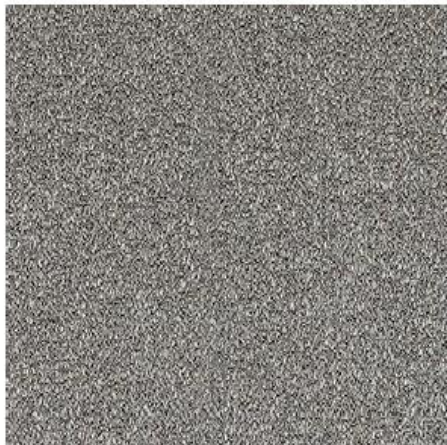
Chrome



## Burch



Coalition:  
Tinsel



Cusp:  
Mercury



Alliance:  
Champagne



Unison:  
Haze

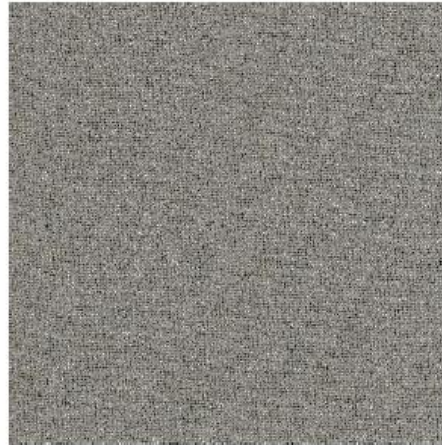
## Guildford Of Maine



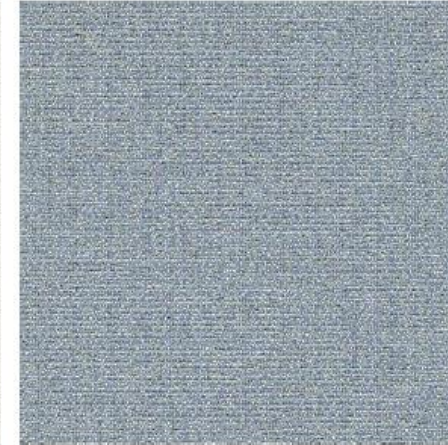
Candid:  
Silver



Theory:  
Bisque



Framework:  
Dove Gray



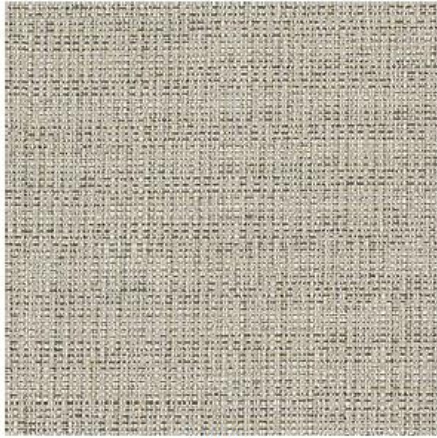
Bailey:  
Kennebec Blue

SELECT GRADE 1 FABRICS

OFC



## Burch



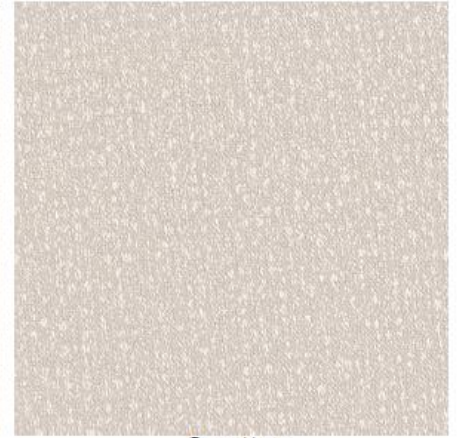
Glitz:  
Chino



Tier:  
Rain



Shine:  
Concrete

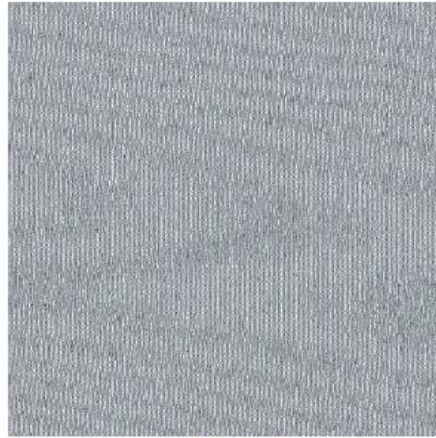


Scatter:  
Natural

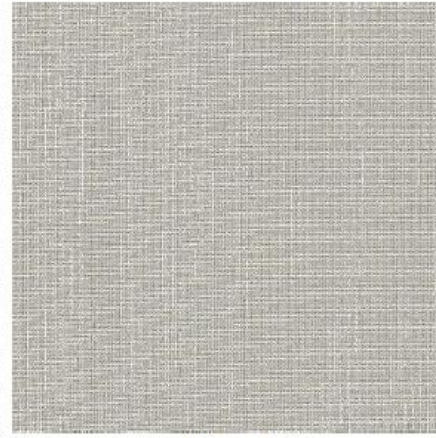
## CF Stinson



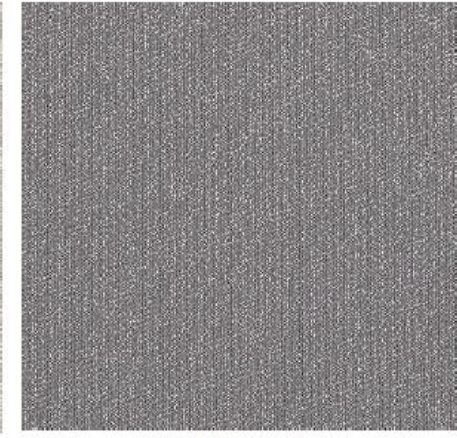
Surf:  
Browse



Acclaim:  
Bluejay



Spree:  
Stone



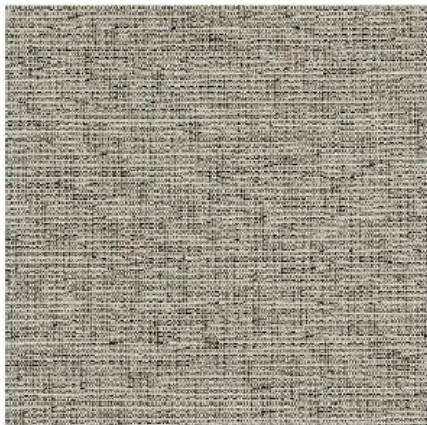
Imprint:  
Volcano

**SELECT GRADE 2 FABRICS**

**OFC**



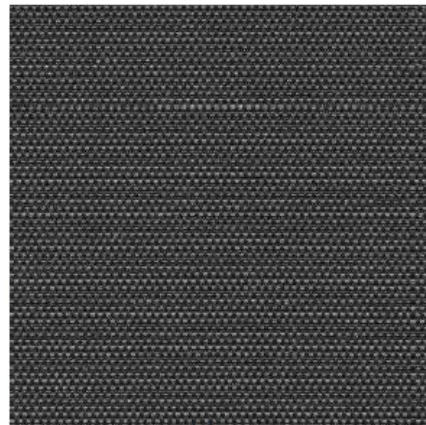
## Guildford Of Maine



Tempest:  
Full Stream



Drift:  
Pebble

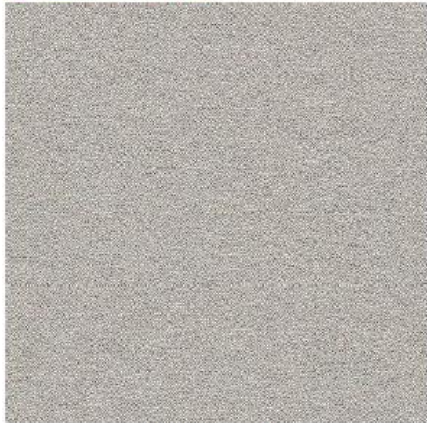


Jane:  
Jet

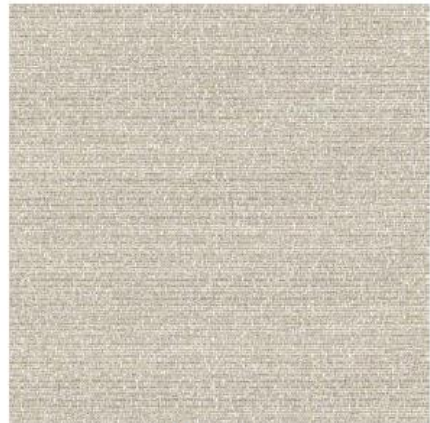


Nitro:  
Tonic

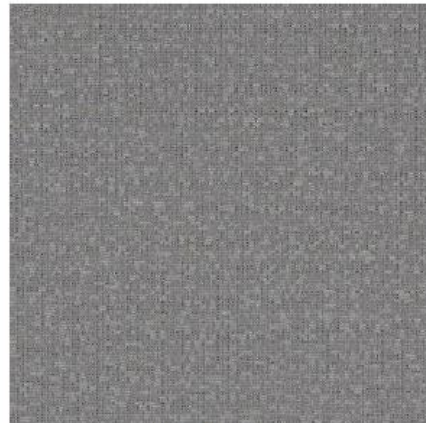
## CF Stinson



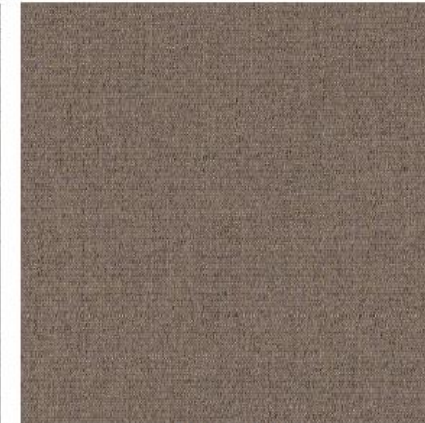
Axis Tool!:  
Shale



Tussah:  
Almond



Backdrop:  
Shadow



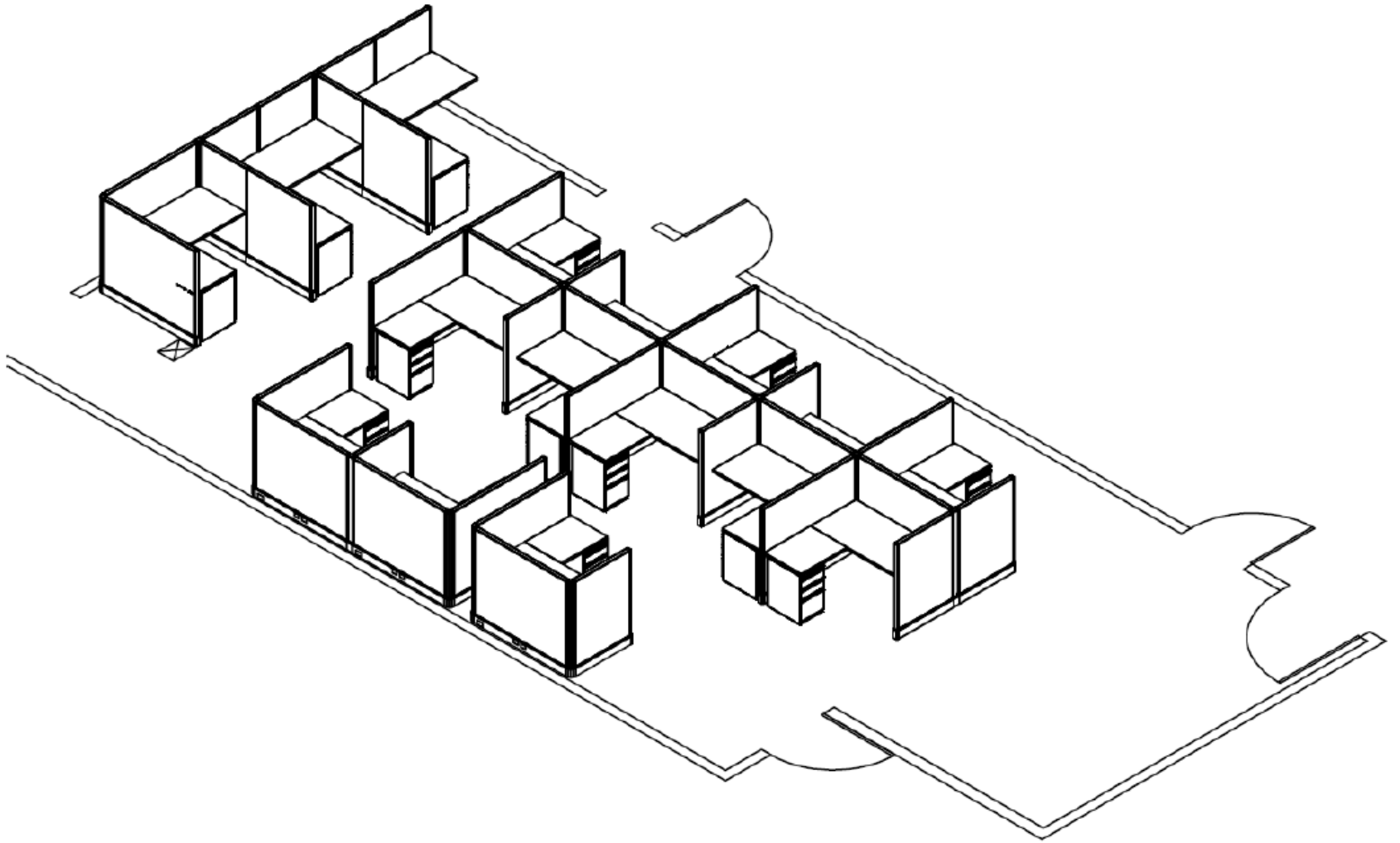
Intermix:  
Filament

**SELECT GRADE 3 FABRICS**

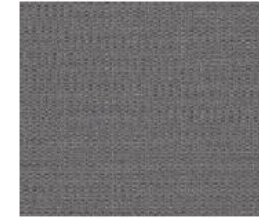
**OFC**







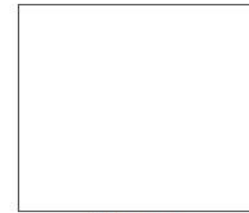
**EXAMPLE 3D ISOMETRIC VIEW DRAWING**



Fabric Panel:  
Shade



Trim & Kickplate:  
Appliance White



Storage:  
Appliance White



Work Surface:  
Portico Teak

# EXAMPLE WORKSTATION SPECIFICATION



**EXAMPLE 3D RENDERING**



Office Furniture Center (OFC) warrants its remanufactured office products to be free from defects in material and workmanship for a period of five (5) years from the initial pick-up/delivery date for as long as the product is owned by the original buyer(s). This Warranty is not transferable and is only given to the original purchaser. For fabric, we honor the warranty time periods and terms specified by the individual manufacturers. This Warranty made by OFC only to purchaser acquiring the product directly from, its authorized dealers, or others who are specifically authorized by OFC to sell such products.

The obligation of OFC and purchaser's remedy pursuant to this warranty are limited to repair or replacement, at the option of OFC, FOB OFC's Distribution Center, of replacement parts which prove, under normal use, to be defective within the period stated, which remedy is expressly agreed to be exclusive as a condition of such replacement. No person, firm, or corporation is authorized to assume for OFC any liability in connection with OFC products. Customer will get credit returns only after received by OFC and must be returned in 30 days.



# CONTACTS

Showroom – Chicago, IL 4800 W. Roosevelt Rd. – 4<sup>th</sup> Floor Chicago, IL 60644

## **MARK AWTRY**

President  
mhawtry@officefurniturecenter.com  
312.698.6962

## **DENNY KACICH**

Vice President, Operations  
dkacich@officefurniturecenter.com  
312.698.6963

## **MICHAEL GLAB**

Director of Sales  
mglab@officefurniturecenter.com  
312.698.4361

## **ANDY CLEMENTE**

Accounting Manager  
aclemente@rightsizefacility.com  
312.698.6908

## **ERICA PEREZ**

Project Coordinator  
eperez@officefurniturecenter.com  
312.698.6907

## **JACOB EDDY**

Designer  
jeddy@officefurniturecenter.com  
312.698.4364

## **PATTI KROL**

Office Furniture Specialist  
pkrol@officefurniturecenter.com  
312.509.4177

## **TARA KMEN**

Designer  
tkmen@officefurniturecenter.com  
312.577.5989